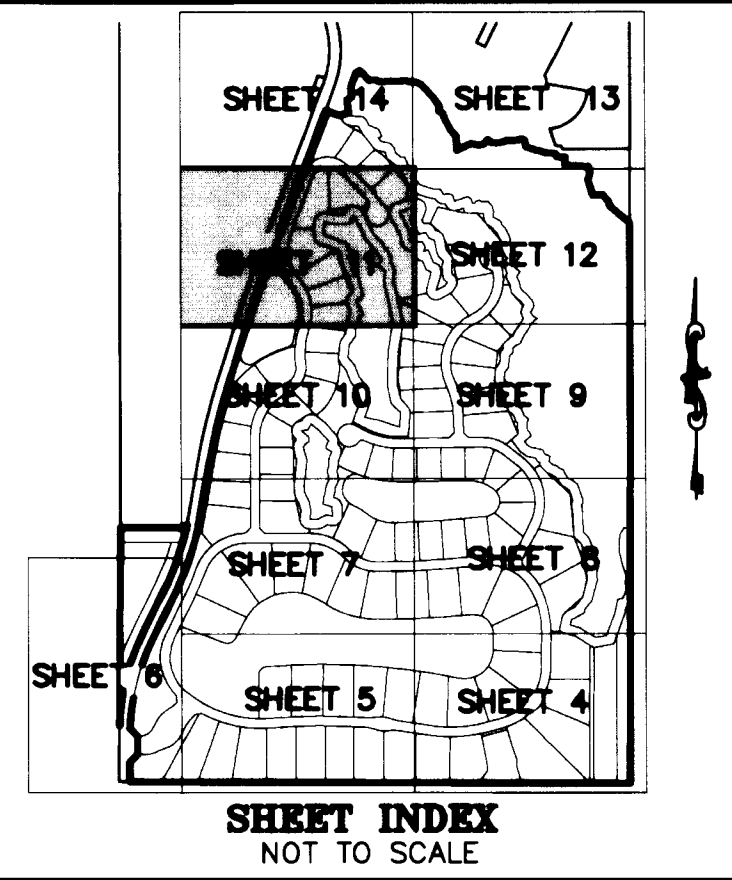


# PENNOCK PRESERVE PUD, PHASES 2 & 3

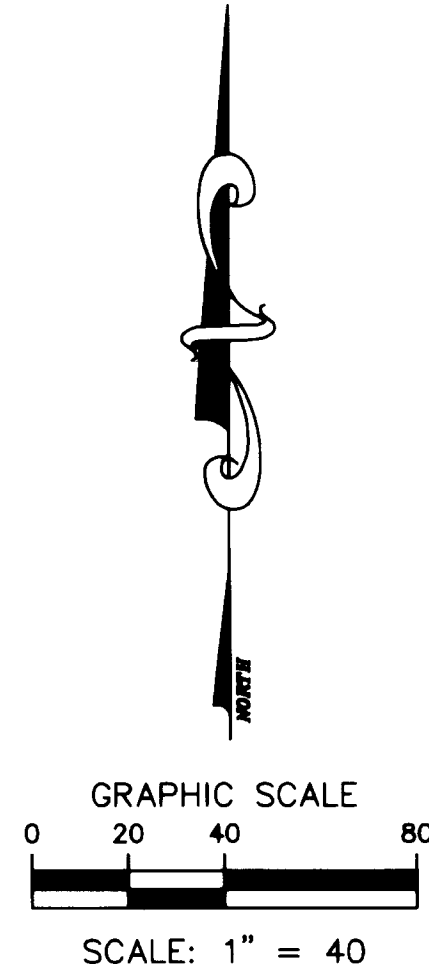
BEING A REPLAT OF "THE OLD PLANTATION PUD", RECORDED IN PLAT BOOK 16 AT PAGE 58, PUBLIC RECORDS OF MARTIN COUNTY, FLORIDA, TOGETHER WITH OTHER LANDS, ALL LYING IN SECTION 28, TOWNSHIP 40 SOUTH, RANGE 42 EAST MARTIN COUNTY, FLORIDA

SHEET 11 OF 14

THIS INSTRUMENT PREPARED BY  
DAVID P. LINDLEY  
OF  
**CAULFIELD and WHEELER, INC.**  
SURVEYORS - ENGINEERS - PLANNERS  
7900 GLADES ROAD, SUITE 100  
BOCA RATON, FLORIDA 33434 - (561)392-1991  
CERTIFICATE OF AUTHORIZATION NO. LB3591

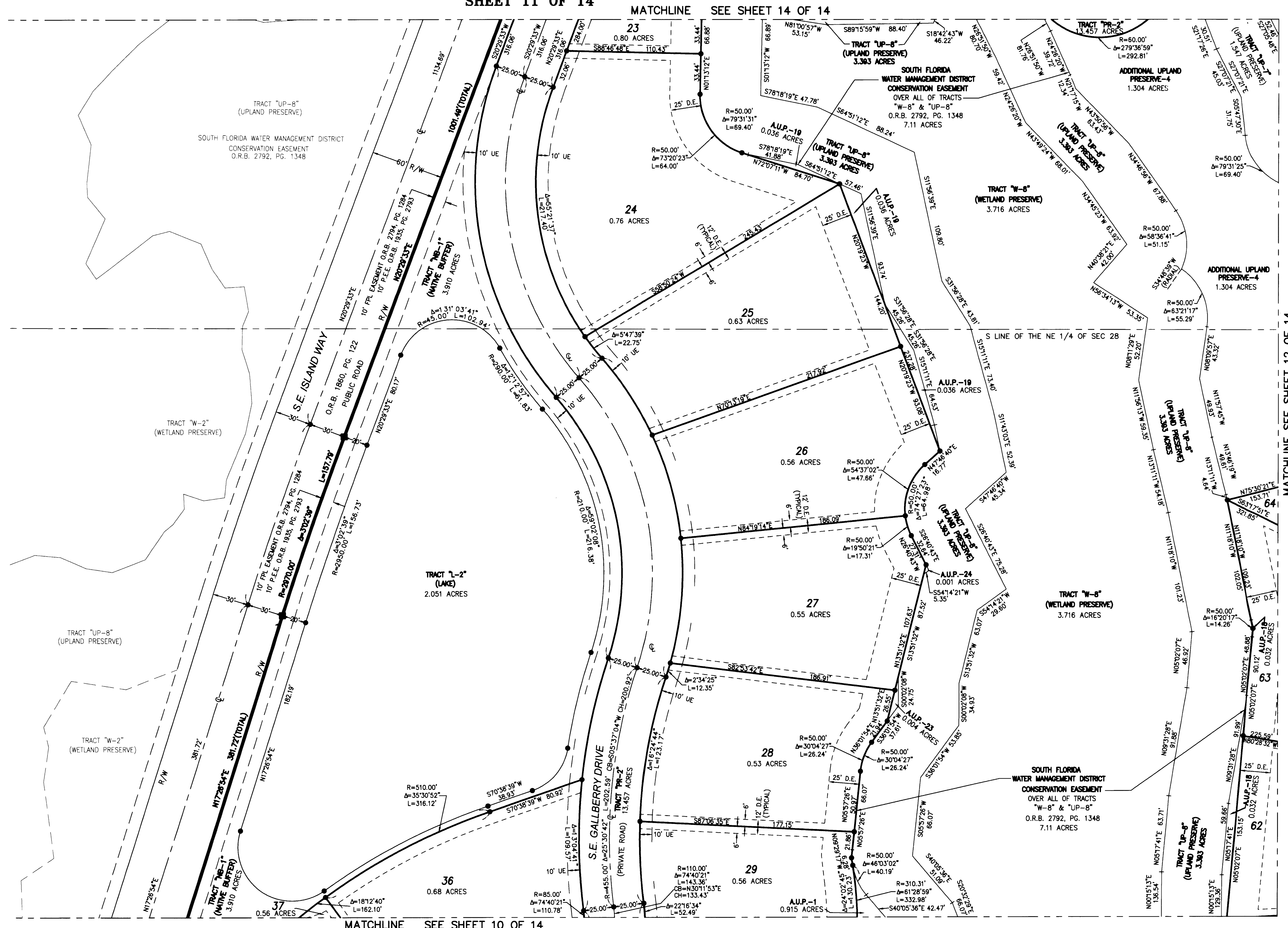


**SHEET INDEX**  
NOT TO SCALE



GRAPHIC SCALE  
0 20 40 80  
SCALE: 1" = 40'

**NOTES**  
**COORDINATES, BEARINGS AND DISTANCES**  
COORDINATES SHOWN ARE GRID  
DATUM = NAD 83 (90/98 ADJUSTMENT)  
ZONE = FLORIDA EAST  
LINEAR UNIT = US SURVEY FEET  
COORDINATE SYSTEM 1983 STATE PLANE  
TRANSVERSE MERCATOR PROJECTION  
ALL DISTANCES ARE GROUND UNLESS NOTED OTHERWISE  
SCALE FACTOR = 1.0000307  
GROUND DISTANCE X SCALE FACTOR = GRID DISTANCE  
BEARINGS AS SHOWN HEREON ARE GRID DATUM,  
NAD 83 (90/98 ADJUSTMENT), FLORIDA EAST ZONE.



MATCHLINE SEE SHEET 10 OF 14

MATCHLINE SEE SHEET 14 OF 14

MATCHLINE SEE SHEET 12 OF 14